

BAERT GALLERY

ART PARIS  
MARCH 30 - 2 APRIL, 2023

MELINDA BRAATHEN

SOPHIE WAHLQUIST

BOOTH H11

Grand Palais Éphémère  
Place Joffre  
75007 Paris

## MELINDA BRAATHEN

B. 1985, Oslo, Norway | Lives and works in Los Angeles, USA

Melinda Braathen's painting seamlessly transitions between elements of skillful figuration and expressively ambient abstraction. This blending of genres, traditions, and techniques imbues the artist's work with a unique sensibility that melds close observation of both nature and human dynamics with the theatricality and acute emotional attunement of pure expressionism. Braathen's work stills and materializes the flux of life's dynamic intensities into bodied abstraction of meditative paint swirled in masterful grooves of balanced coloration. The artist's working process usually starts with her own photographs, taken outside in natural settings and often incorporating figurative elements. The photos are then deliberately decolorized, leaving only the contours of their constitutive parts in place, and meticulously transferred to canvas. Braathen subsequently fills the transferred outlines with more emotionally and psychologically charged colors, highlighting the richness and density of the living landscape's resonant commotion of co-activity by way of its expressive solidification in paint. A considerable portion of the painting's surface is often built up with small brush marks that simultaneously bring out the recognizable qualities of the painted subject while ushering in a deeper sensitivity to the environment's elemental and energetic forces.



MELINDA BRAATHEN

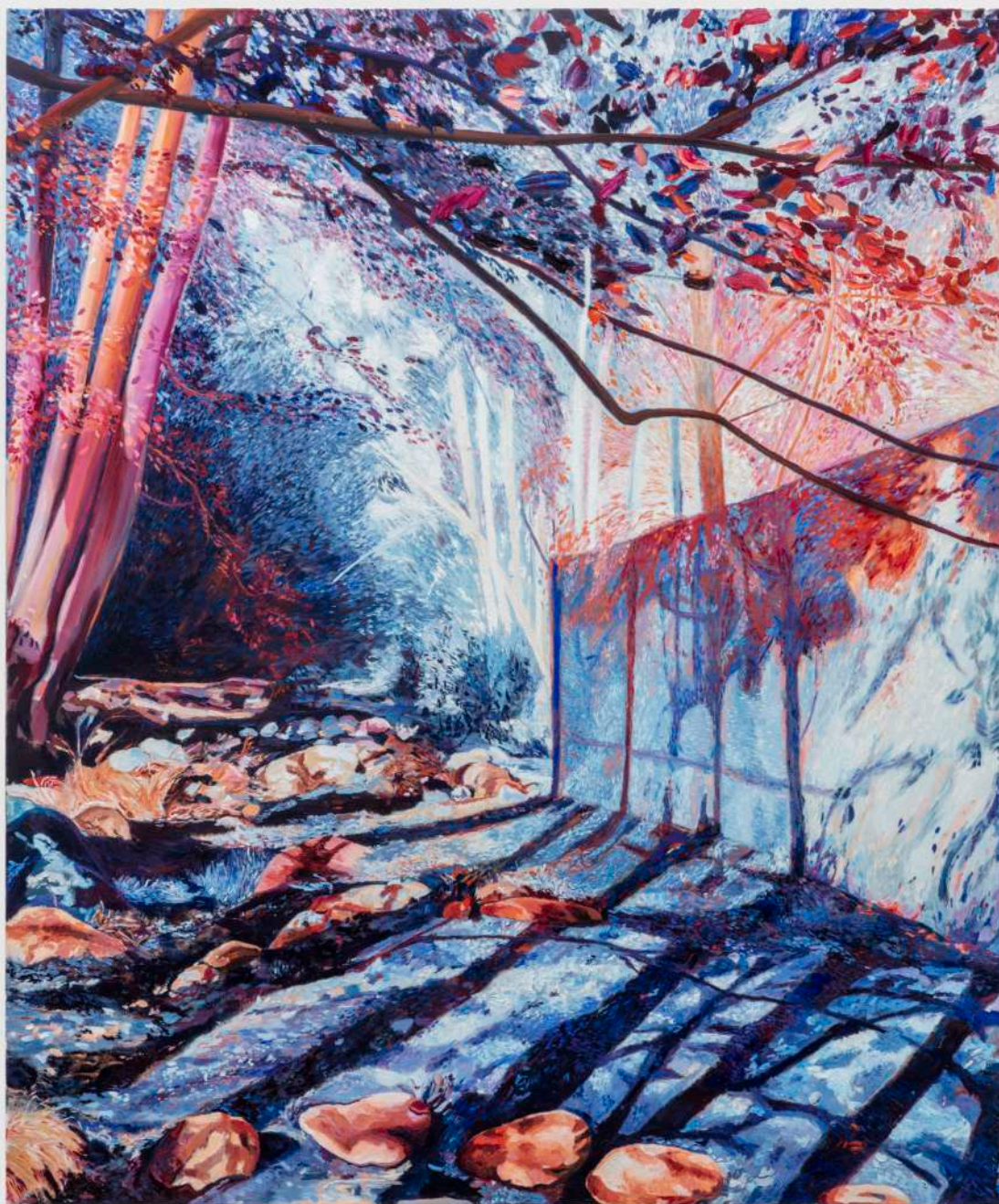
*Molly*, 2022  
Oil on canvas  
182.9 x 152.4 cm  
72 x 60 in





MELINDA BRAATHEN

*Alia*, 2022  
Oil on canvas  
182.9 x 152.4 cm  
72 x 60 in







MELINDA BRAATHEN

*Seeds of thought that stayed*, 2022

Oil on canvas

152.4 x 121.9 cm

60 x 48 in









MELINDA BRAATHEN

*Untitled, 2023*

Oil on canvas

61 x 50.8 cm

24 x 20 in



## SOPHIE WAHLQUIST

B. 1983, Eckernförde, Germany. Lives and works in Los Angeles, USA

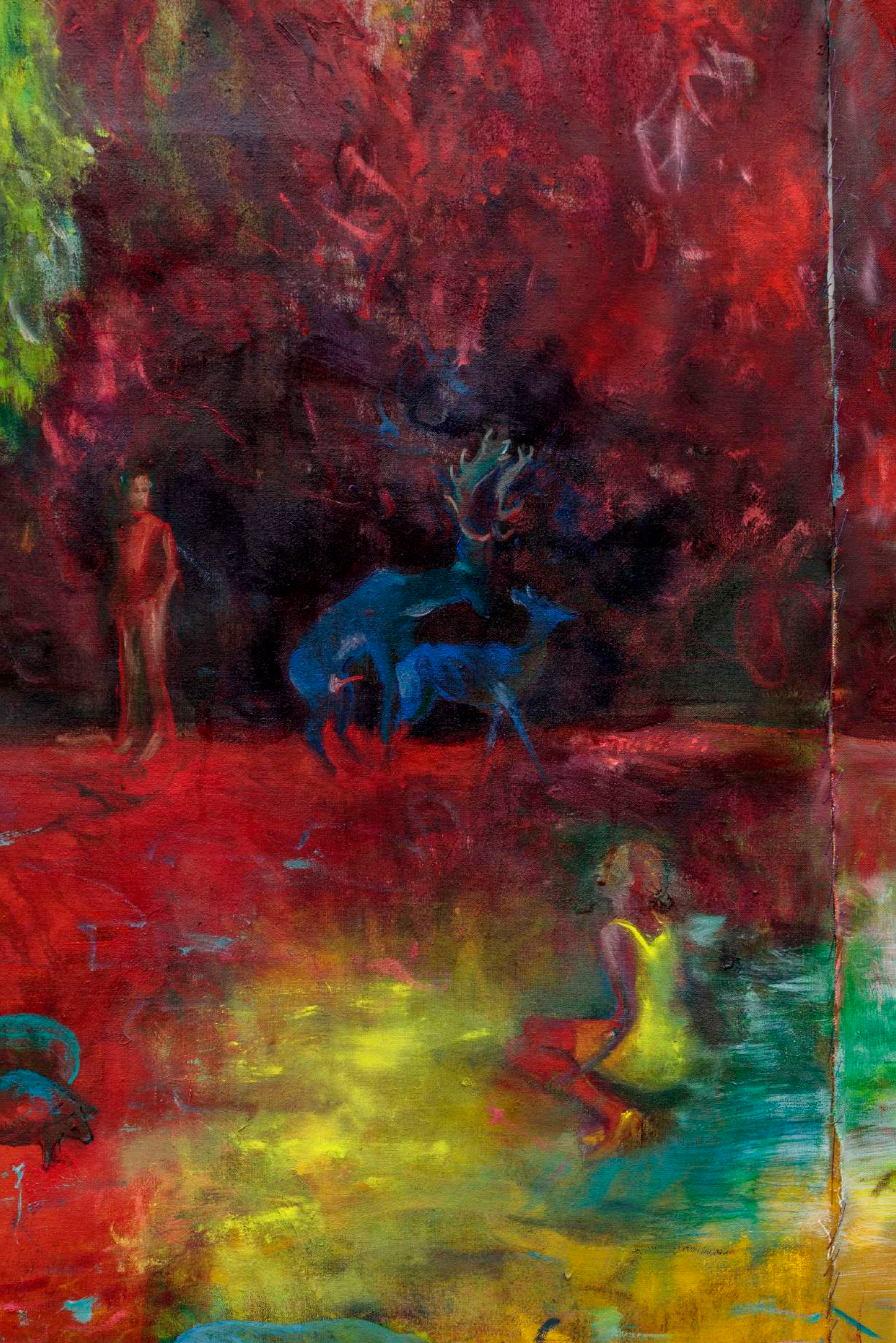
As a German transplant to Los Angeles, Sophie Wahlquist's work combines the dueling sensibilities of a historically rich European lineage of figuration in painting and California's sun-drenched prism on the natural world. Wahlquist's paintings depart from a state of mind rather than from a narrative. Playing with different genres of painting and medium, new gestures and perspectives reverse existing ideas. She likes to negotiate the level to which absence can be replaced by clarity of something intangible or how the depiction of something recognizable can become a trigger for imagination.



SOPHIE WAHLQUIST

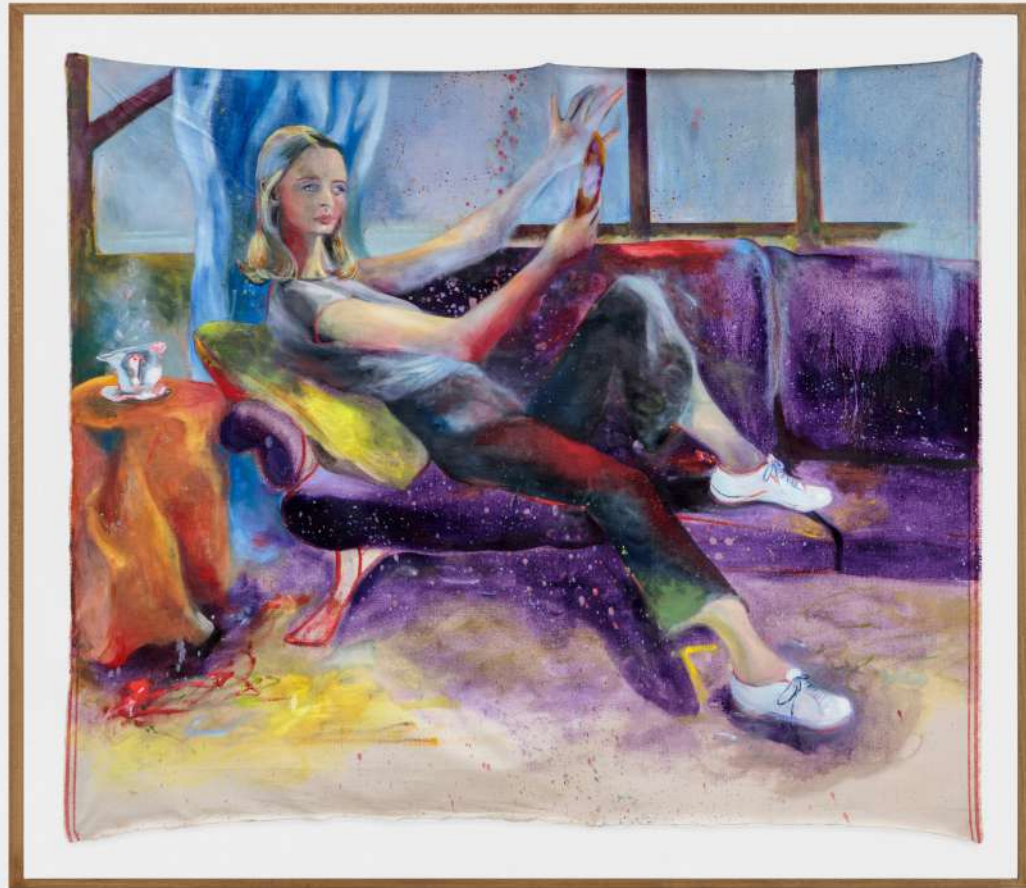


*In the garden, 2022*  
Oil on Belgian linen  
139 x 175.5 cm | 54 3/4 x 69 1/8 in  
151.5 x 188.5 cm | 59 5/8 x 74 1/4 in (framed)



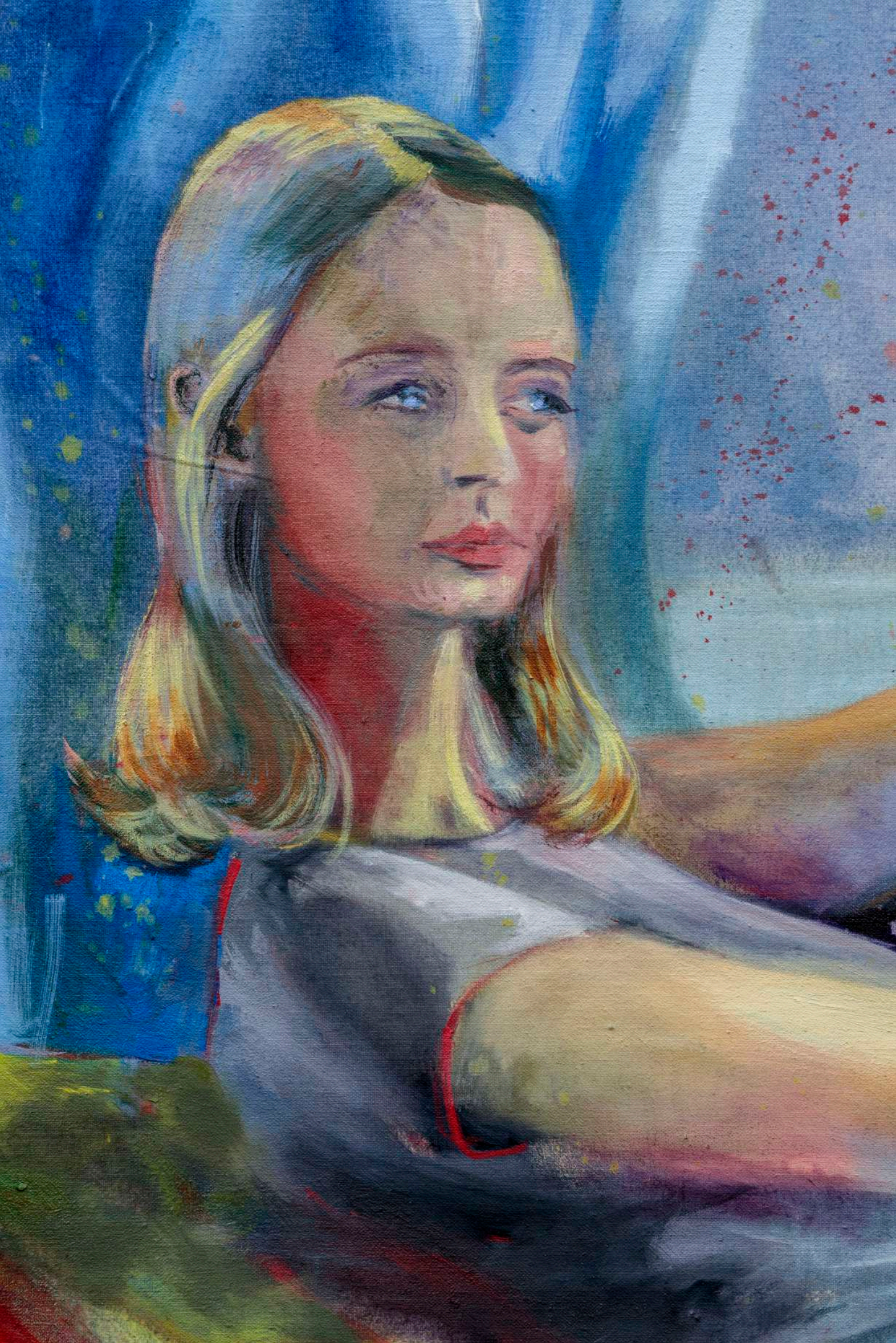


SOPHIE WAHLQUIST



*Maja*, 2022-23  
Oil on canvas  
122.6 x 138.4 cm | 48 1/4 x 54 1/2 in  
133 x 152 cm | 52 3/8 x 59 7/8 in (framed)







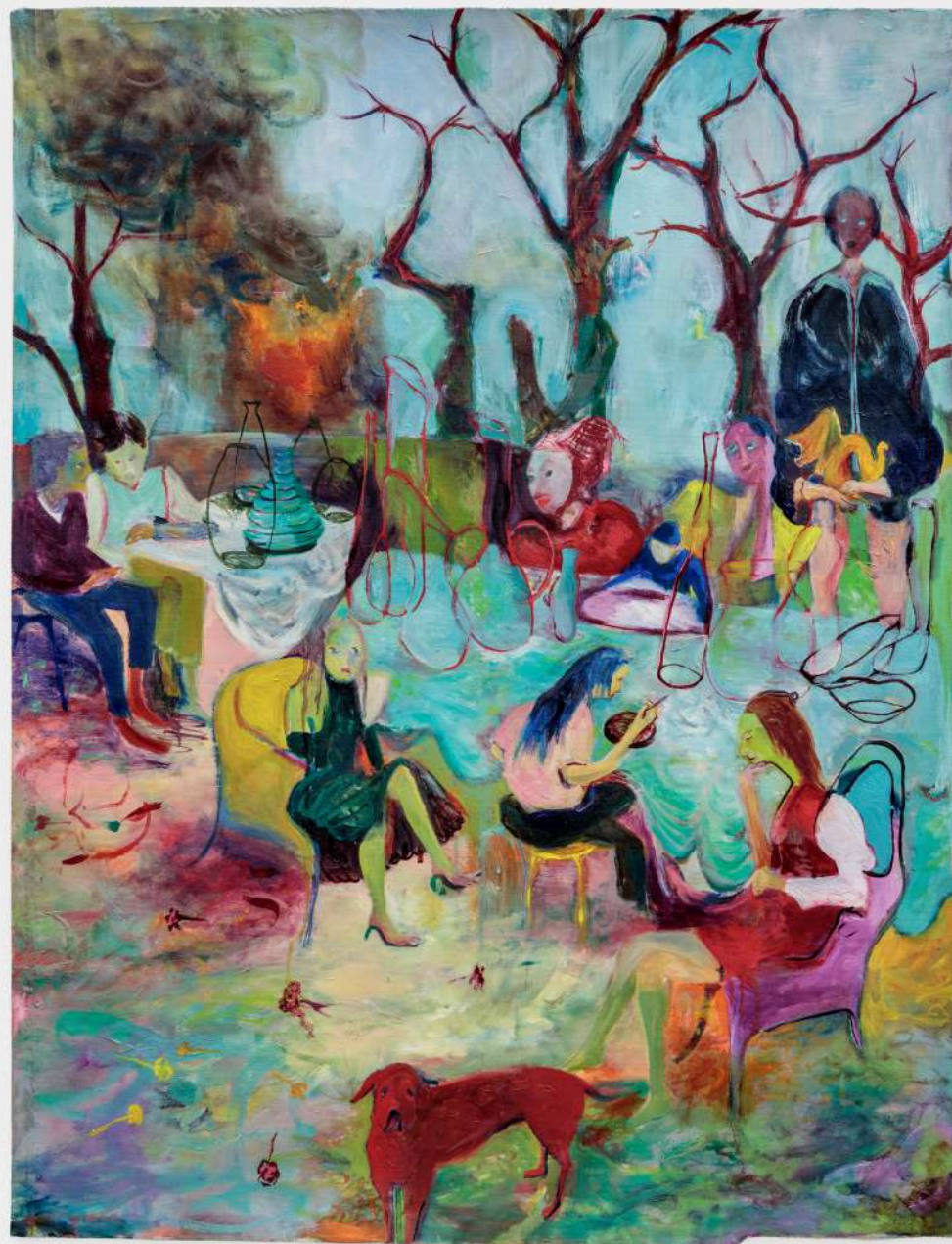
SOPHIE WAHLQUIST

*To more time*, 2023

Oil on Belgian linen

98 x 77 cm | 38 5/8 x 30 1/4 in

113 x 90 cm | 44 1/2 x 35 3/8 in (framed)







SOPHIE WAHLQUIST

*Our shoes moaned in tandem*, 2022

Oil on Belgian linen

100 x 77 cm | 39 3/8 x 30 1/4 in

113 x 90 cm | 44 1/2 x 35 3/8 in (framed)









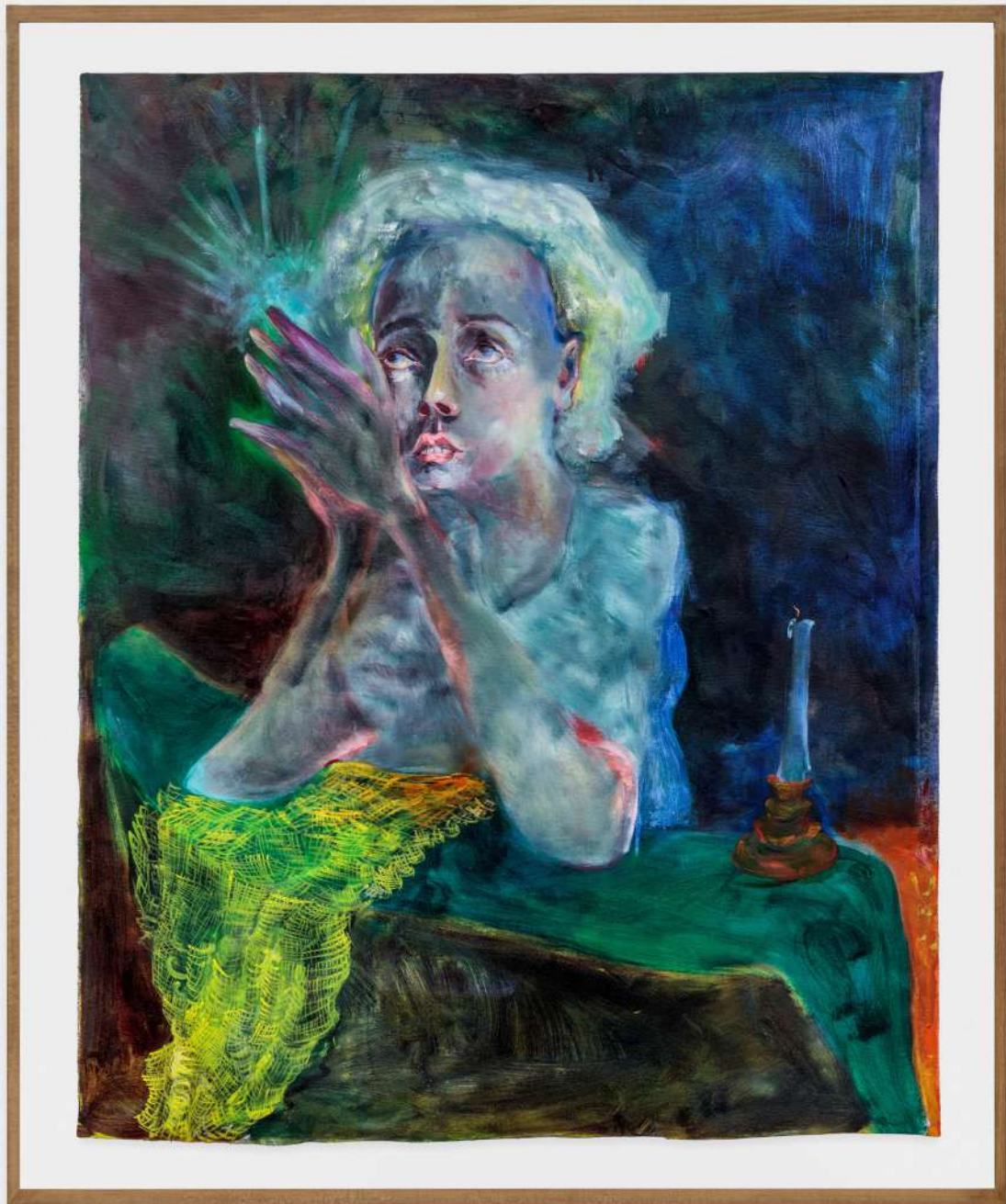
SOPHIE WAHLQUIST

*Hold my breath*, 2022

Oil on Belgian linen

100 x 77 cm | 39 3/8 x 30 1/4 in

110 x 90 cm | 43 1/4 x 35 3/8 in (framed)







SOPHIE WAHLQUIST

*Breathers Vertigo*, 2022

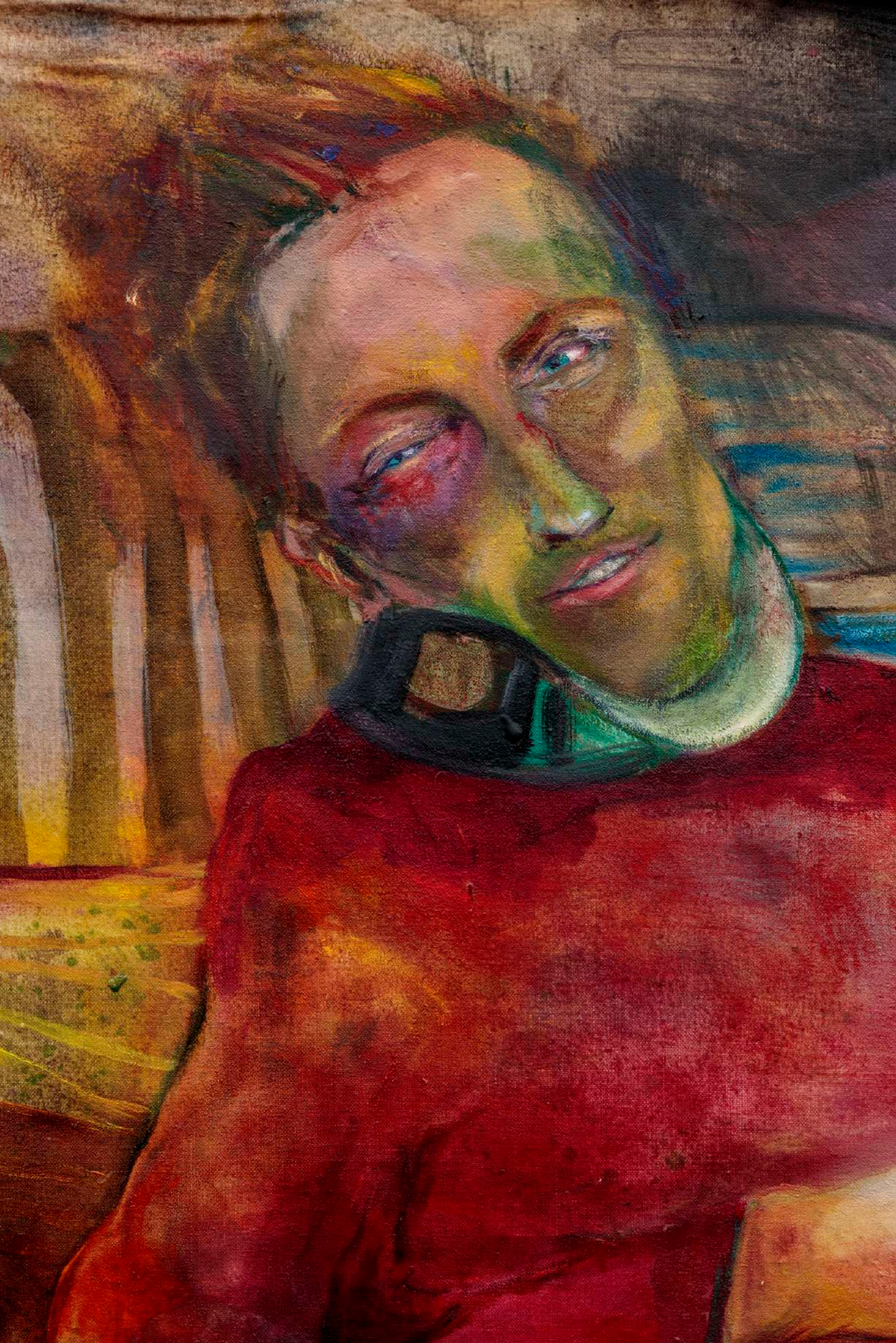
Oil on canvas

95.9 x 76.2 cm | 37 3/4 x 30 in

110 x 90 cm | 43 1/4 x 35 3/8 in (framed)







SOPHIE WAHLQUIST

*Rolling chairs, 2022*

Oil on canvas

96.5 x 75.9 cm | 38 x 29 7/8 in

110 x 90 cm | 43 1/4 x 35 3/8 in (framed)

